

EXPERION® AND CONTROLEDGE™ PLC: REDEFINING PLANT WIDE INTEGRATION

Honeywell's Experion® platform when combined with ControlEdge™ PLC provides an integrated control solution through all levels of process and business for optimized operations and maintenance efficiencies

TABLE OF CONTENTS

- 1 Integration challenges due to aging PLCs
- 2 Fast and Lean Integration
- 3 Consistent, Plant-wide HMI Integration
- 4 Simplified Asset Management
- 5 Greater Engineering Flexibility
- 6 Improved Connectivity
- 7 Robust Cyber Security
- 8 Honeywell - Your Right Partner for Automation

SUMMARY

Since their introduction, PLCs have evolved from simple on-off controllers to advanced processor-based systems that execute complex control algorithms.

The demand for added features, precision, and seamless connectivity across plant floor has driven an increasing need for PLCs to integrate with other control systems.

Honeywell's new PLC, part of the ControlEdge family of next generation controllers, provides unprecedented connectivity through all levels of process and business operations.

ControlEdge PLC, when combined with Experion® reduces integration costs for balance of plant through dramatically improved startup and commissioning time and decreased cyber-attack risks with embedded secure communication, thereby providing lower total cost of ownership and a more reliable and consistent plant-wide operations.

Honeywell can serve as your single vendor for all automation needs, including the DCS, PLC, SCADA, Field Device Manager for asset management, and a Panel PC—all with seamless integration and support.

This whitepaper describes key integration features of Experion and ControlEdge PLC that enables a more Standardized, Flexible, Connected and Cyber Secure solution experience.



INTEGRATION CHALLENGES DUE TO AGING PLCS

1

For any plant, lack of modern age PLCs and robust connectivity infrastructure leads to various issues which accumulates and result into high cost of ownership of systems. These issues include:

- High maintenance cost due to complex/ loose integration of systems, interoperability issues
- No single point of ownership leading to higher troubleshooting time/cost
- Project schedule impact due to lesser adaptability to last minute project changes
- Poor connectivity leading to delayed service and downtime
- Higher risk to plant safety and availability due to cyber security threats
- Complex operator workflow and decision making due to lack of standard HMI solution across control room and field

ControlEdge PLC, a modern age controller supporting Honeywell's IIoT-ready initiative along with proven Experion HMI/SCADA provides an integrated and standard solution across the plant. This provides an easy to use, lean and flexible engineering environment for improved startup, commissioning and change management.

Designed to work with any SCADA system and over variety of interfaces, ControlEdge PLC unlocks a superior experience when used with Experion DCS/SCADA and Experion Panel PC over OPC UA. This integration provides an unprecedented connectivity through all levels of process and business for optimized operations and maintenance efficiencies that release personnel from manual processes.

The Industrial Ethernet enabled connectivity thru OPC UA provides a dedicated data flow model which simplifies the integration architecture and reduces maintenance overheads and need for specialized hardware such as network gears, communication gateways etc. Also, equipment serviceability and performance monitoring is improved through use of optional features like OEM cloud connectivity. Such improved connectivity comes with robust cyber security as well. Features like Secure boot, built-in firewall, ISA 99 ready modelling helps reduce system vulnerabilities to cyber threats.



YOUR CHALLENGE

“Connect the PLC to my control system... with less effort”

“Integrate my control system with PLC over a Secure interface”

“Operate from the equipment or the control room... more easily without learning different sub-systems”

OUR SOLUTION

IIoT ready controller provides seamless integration

Universal IO for lean project execution

Cyber-Security across all levels

OPC UA based communication

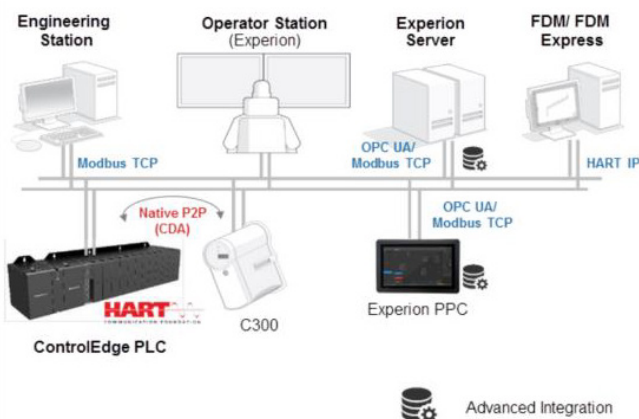
Experion systems take the controller integration paradigm to the next level with Honeywell's new ControlEdge PLC Integration over OPC UA interface.

Enhanced ControlEdge PLC and Experion integration over OPC UA interface comes with pre-built PLC diagnostics in the Experion system, an Integrated alarm summary for C300 controller and PLC, and integrated history, trend and reporting - resulting in fast and easy integration with significant cost savings and ease of plant operations.

This integration is fast and lean where the PLC configuration tool can be directly launched from Experion engineering environment either from local Panel HMI or from the control room desktop station. This provides easy operability as well as flexibility for doing the initial PLC configuration, or changes during the operation and maintenance.

The engineered ControlEdge PLC variables are automatically configured in the Experion point database which helps eliminate the need to build your PLC variables again in control system. Also, the Experion Analog and Status points are generated directly from PLC Program therefore avoiding double entry of configuration in PLC and control system.

With ControlEdge PLC and Experion, the configuration of any new control strategy or updating an existing one is performed in minutes, thanks to its automated and efficient workflow and use of OPC UA interface. The 'Named Variable Access' feature of OPC UA interface allows direct mapping of the critical point parameters of the ControlEdge PLC to Experion control system. This improves the configuration time by up to 90% compared to conventional interfaces like Modbus and DNP3. This huge savings in configuration time, efforts and avoiding mapping complexities significantly improves the plant startup time.



ControlEdge PLC, Experion and Experion PPC Integration

CONSISTENT, PLANT-WIDE HMI INTEGRATION

3

Honeywell's new Experion PPC (Panel PC) Touch panel provides a single HMI for PLC diagnostics and Experion system displays.

The touch user interface allows you to operate from the equipment or from the control room easily without learning disparate systems. Along with a consistent Experion User Interface, the Experion PPC shares common set of engineering and HMI tools with Experion system including faceplates, system and detail displays, HMI web solution packs and more. This ensures seamless plant-wide PLC configuration and operation flexibility and consistent Experion integration at machine, process and system level for better plant startup efficiencies.

Depending on the system availability needs, the Experion PPC can perform as a remote Experion station, as an Experion server with station or as a remote thin client connecting to any of the engineering station or other nodes. These flexible operation modes help meet different architecture needs, greatly improves startup and commissioning time and reduces data integration costs.

An Experion based consistent operator view and control for local operations provides a seamless data flow and exchange across the plant. A combination of ControlEdge PLC, Experion PPC and central Experion DCS or SCADA system provides works on Common HMI tools extended across the plants and helps plants with

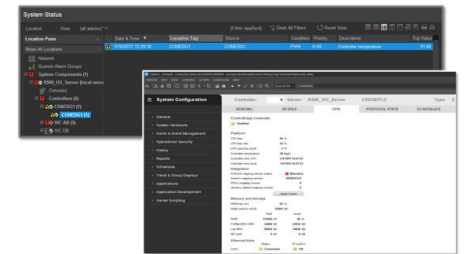
- Significantly lowered total cost of ownership with reduced engineering efforts, design flexibility and optimized training and maintenance overheads
- Improved operator interactions and the process workflow where the local operator can now interact with other related plant processes, therefore better operator emergency response
- Improved lifecycle support by providing ease of system maintenance and change management

Experion HMIWeb Display Builder is the object oriented tool for building and maintaining PLC HMI displays. It includes an object browser to easily navigate and make changes, a property window to enter and view parameters, and a structured list of shapes. Shapes can be dragged and dropped to quickly engineer new displays and modify existing ones.

The Experion HMI incorporates features developed from extensive consideration of human factors by the Abnormal Situation Management consortium. Operators' situational awareness is optimized, fatigue minimized, and quick identification and response to abnormal situations promoted. These features are available both in standard system displays and user built displays using the HMIWeb Solution Pack library.



Experion Panel PC for Field Operations



Fast and Easy Prebuilt PLC Diagnostics

FEATURES AND BENEFITS

Fast and Lean Integration

- Easy configuration and change management
- Seamless operability and ease of operations
- Avoiding traditional PLC point mapping complexities in control system

Plant-wide HMI Solution

- Honeywell's new Experion Panel PC for field operations
- Common HMI and tools
- Flexible operations, improved data flow and decision making
- Reduced engineering efforts, training and maintenance overheads

Asset Management

- Onboard HART UIO with HART-IP protocol based integration with Honeywell's FDM

Universal I/O

- Lean project execution
- Easily executed late assignment changes
- Remote configuration
- Reduced spares

OPC UA Protocol

- Smooth device integration
- Easy configuration
- Cloud friendly open yet secure communication

Integrated Cyber Security

- Security built into PLC and Experion
- Preserve safety and availability
- Industrial cyber security solutions and managed services

Lifecycle benefits through Honeywell

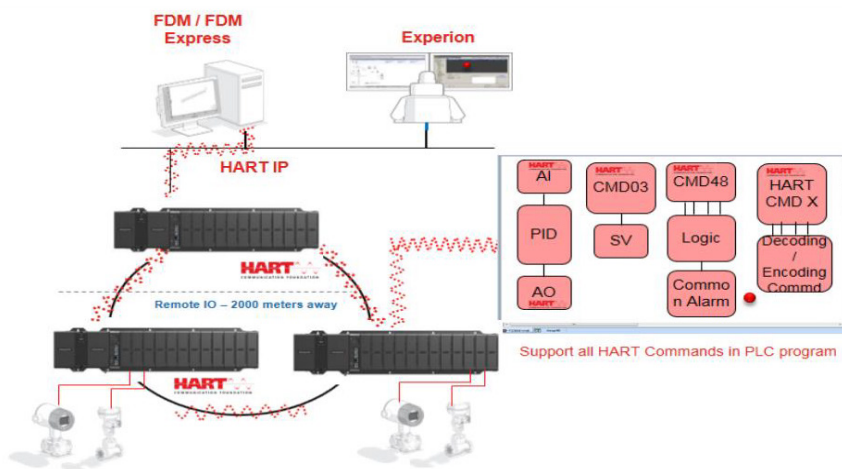
- Single vendor for DCS, PLC, SCADA, asset management and HMI panel
- Preserve safety and availability
- Easy upgrade paths
- Comprehensive Support and Services



ControlEdge PLC offers onboard HART support on any of 16 Universal IO channels and HART-IP protocol support.

Honeywell's Field Device Manager (FDM) provides fast and accurate commissioning of HART field devices. Rapid maintenance decisions are afforded through simplified diagnostics and fewer site trips. The combination of FDM and HART-IP protocol offers design flexibility using the HART-IP open standard and investment protection through use of existing plant network infrastructure. Finally, FDM conveniently co-exists on the ControlEdge Builder workstation and is scalable to large sized projects.

The ControlEdge PLC and FDM can access both the HART device's digitally accurate secondary variable and its diagnostic data. The operator can use Honeywell's Field Device Manager to connect through to the HART device using HART IP.



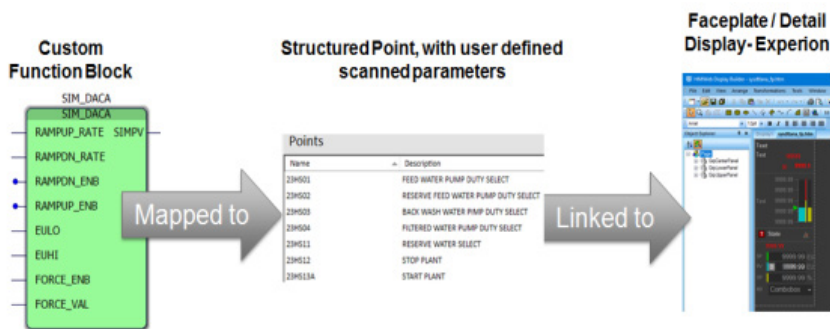
HART data accessed by PLC and FDM remotely

Honeywell's automation experience and innovative LEAP methodology are the key to increased flexibility – allowing industrial firms to optimize project execution. With LEAP, companies can realize significant capital savings on the total installed automation costs of a project, reduce rework costs, and minimize schedule delays.

Essential to the LEAP approach is the implementation of 16- channel Universal I/O modules (UIO) supporting HART signals, which offer flexibility in I/O type, eliminating the need for custom PLC hardware alignment with different I/O configurations and enabling simplified field device configuration and maintenance. Any field signal can be connected to any I/O channel. Deployment of UIO provides greater flexibility for late stage changes, such as configuration and design changes on a typical automation project.

The User Defined Scanned Parameters (UDSP) feature of Experion allows mapping structured data types and function blocks of the ControlEdge PLC under a single Experion IO point. It helps reducing the cost of data ownership by accumulating all the related data at one place and make it available for operators for further analysis. These additional parameters can be set as dynamically scanned in order to optimize the communication network bandwidth utilization as necessary.

While generating Experion IO points directly from ControlEdge PLC program, the Experion engineering environment allows users to optionally deselect and override PLC IO tags and create own mapping for setting PLC point properties. Also, the comparison tools in Experion help track the changes made to an existing PLC program with user friendly options to regenerate and/or override. Together these features and tools provide engineering flexibilities for optimizing efforts and adjust to engineering changes.



Experion's UDSP Feature

Built on a proven and capable platform, ControlEdge provides an IIoT-ready open platform that enables users to better leverage data across their assets.

Use of the OPC UA protocol offers smooth integration to a broad range of instruments, equipment and software from multiple vendors while providing built-in cyber security. Interoperable multi-level and multiplatform open communication provides flexible and scalable design, enabling standardization with less hardware.

An IIoT-ready platform enables more direct access to cloud-based applications for visualization and analytics. With direct access and reduced gateways, ControlEdge provides investment protection and easier maintenance, and therefore reduced cost and risk.

Experion platform offers an Integrated alarm summary for C300 controller and PLC, and integrated history, trend and reporting - resulting in fast and easy integration with significant cost savings and ease of plant operations.

Native Peer to Peer communication between ControlEdge PLC and Experion C300 using CDA protocol eliminates protocol mapping errors and reduces integration time.

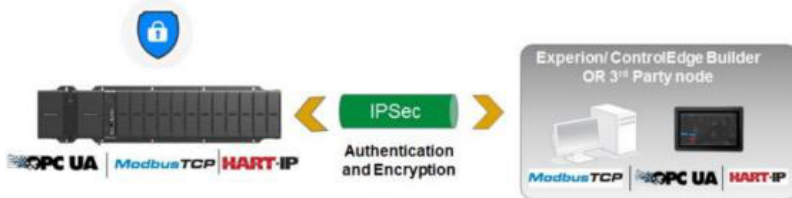


Honeywell's embedded cyber security supports compliance, reduced risk, and availability. Ours is the first PLC that is ISA Secure Level 2 certified.

Features include secure boot to prevent uploading of unauthorized software, and a built-in firewall to reduce exposure to denial-of-service attacks and message flooding, and a certified secure development lifecycle to ensure security is built-in from the start.

In addition, PLC communication is secured using IPSec. This prevents man-in-the-middle attacks and protects ControlEdge PLC from unauthorized access. Encryption for critical data employs NSA Suite B recommended algorithms. This supports easy configuration and provides certificate-based authentication.

At the forefront of industrial safety and security, Honeywell offers Industrial Cyber Security Solutions and Managed Services that help protect the availability, safety and reliability of industrial control systems and site operations. Honeywell improves business performance by reducing the risk of incidents, faults and failures that disrupt normal operations. This means customers can have greater confidence in the security of their PLC installation.



PLC Communication with Experion - Secured with IPSec

HONEYWELL - YOUR RIGHT PARTNER FOR AUTOMATION

8

With Honeywell technology, industrial sites have a flexible way to efficiently access data in a seamless manner, ensuring easy configuration and maintenance.

Honeywell can serve as a single vendor for all automation needs, including the DCS, PLC, SCADA, asset management with Field Device Manager, and an HMI panel.

ControlEdge PLCs are tightly integrated with the Experion control system architecture. By partnering with an automation vendor offering both DCS and PLC solutions, users have a single point of contact from project inception to support, substantially reducing CAPEX and OPEX.

Choosing Honeywell provides distinct support advantages as well as access to our broad portfolio. Honeywell helps customers cost-effectively manage their control and safety infrastructure in the face of constantly evolving technology with extended lifecycle support, flexible and easy migration paths, and virtualized upgrade capabilities.

Honeywell has continually guarded customer investments by providing easy upgrade paths to the latest control system technology. Honeywell continues to evolve and innovate to bring significant advances in automation technology, while also providing a smooth migration path to today's technology when the time is right for you. We have a wealth of experience in migrating legacy control and safety systems, no matter who the manufacturer.

Every Modular Control System installation is backed by Honeywell's comprehensive one year Warranty Support through our global Technical Assistance Centers (TAC). From installation and commissioning to start-up and ongoing operations, TAC has you covered with timely and expert local support. Factory trained and experienced TAC engineers provide telephone technical support, prompt answers to questions regarding procedures, documentation, operation, service, training and system enhancements. TAC support also includes a review of operational procedures, software analysis, and diagnostic evaluations when required. For support services, ask for Total Care Services for Modular Systems. Extended support of installed assets has proven to be key to improved control system reliability, reduced downtime, increased plant availability, and lower operating costs.



For more information

To learn more about Honeywell's SmartLine Transmitters, visit www.honeywellprocess.com/smartline or contact your Honeywell account manager.

Honeywell Process Solutions

2101 CityWest Blvd, Houston, TX 77042
Honeywell House, Arlington Business Park
Bracknell, Berkshire, England RG12
1EB Shanghai City Centre, 100Junyi
Road Shanghai, China 20051

www.honeywellprocess.com

Experion® and ControlEdge™ are trademarks of Honeywell International Inc. All other trademarks are the property of their respective owners.

WPR | 441DS | February 2024
© 2024 Honeywell International Inc.

**THE
FUTURE
IS
WHAT
WE
MAKE IT**

Honeywell